

## 5.2 Bournemouth Unitary Authority

Habitat	Habitat area within County (ha)	Habitat area within ESA (ha)	% of county habitat resource within ESA	Habitat area within CSS (ha)	% of county habitat resource within CSS	Habitat area within WES (ha)	% of county resource within WES	Habitat area within AES (ha)	% of county habitat resource within AES	Habitat area within SSSI (ha)	% of county habitat resource within SSSI
Coastal Sand Dune	2	0	0%	0	0%	<1	0%	<1	<50%	2	100%
Coastal Saltmarsh and Mudflat	31	0	0%	0	0%	<1	0%	<1	<3%	13	42%
Coastal and Floodplain Grazing Marsh	2	0	0%	0	0%	0	0%	0	0%	1	50%
Maritime Cliff and Slope	20	0	0%	0	0%	<1	0%	<1	<5%	20	100%
Saline Lagoon	3	0	0%	0	0%	0	0%	0	0%	3	100%
Fen	1	0	0%	1	100%	1	100%	1	100%	1	100%
Woodland	-	0	-	1	-	0	-	1	-	-	-
Lowland Dry Acid Grassland	5	0	0%	1	20%	1	20%	1	20%	5	100%
Heathland within Lowland Areas	72	0	0%	24	33%	69	96%	69	96%	69	96%

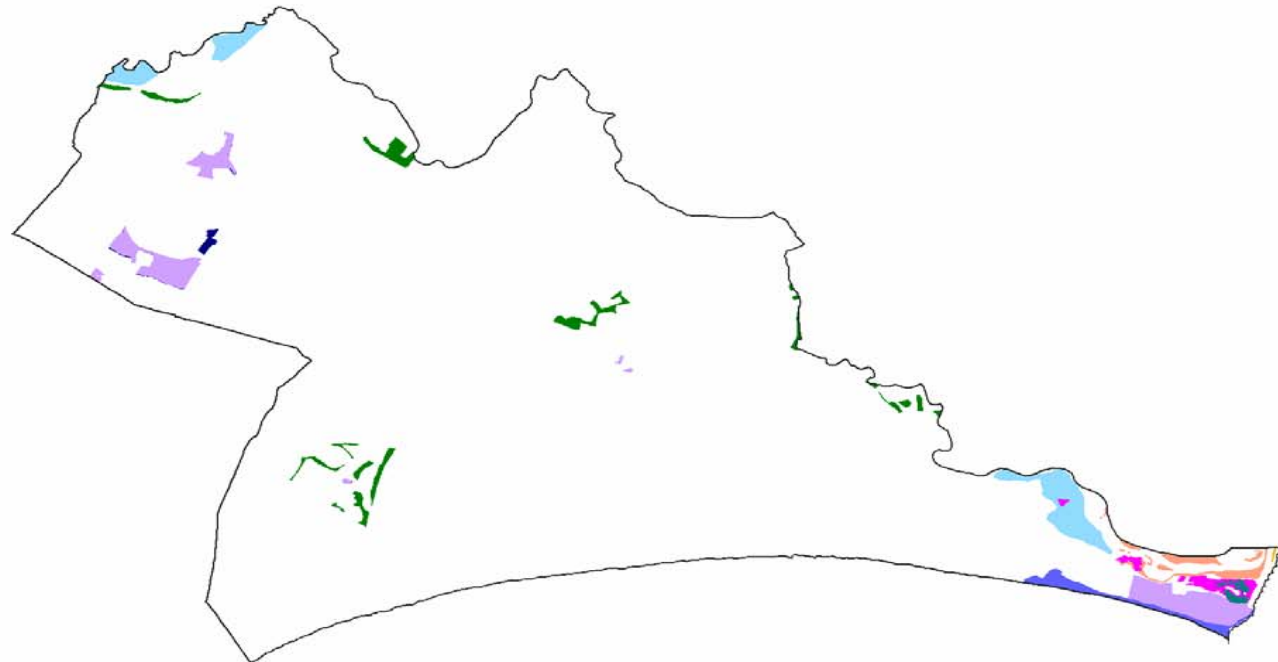
### Excluding Woodland

- There is a minimum of 136ha of UKBAP Priority Habitat in Bournemouth
- A minimum of 80ha (59%) of UKBAP Priority Habitat in Bournemouth is currently found on land with associated AES agreements
- A minimum of 114ha (84%) UKBAP Priority Habitat in Bournemouth is currently found within the boundaries of SSSIs

July 2006

Map showing distribution of UK BAP Priority Habitat within Bournemouth Local Authority

- Heathland within Lowland Areas
- Heathland within Upland Areas
- Seagrass Beds
- Sabellaria Reef
- Saline Lagoon
- Purple Moor Grass and Rush Pasture
- Semi-natural Broadleaf Woodland
- Mudflat
- Maritime Cliff and Slope
- Lowland Meadow
- Lowland Acid Grassland
- Lowland Calcareous Grassland
- Fen
- Coastal Salt Marsh
- Coastal Floodplain Grazing Marsh
- Coastal Vegetated Shingle
- Reedbed
- Maerl Bed
- Coastal Sand Dune

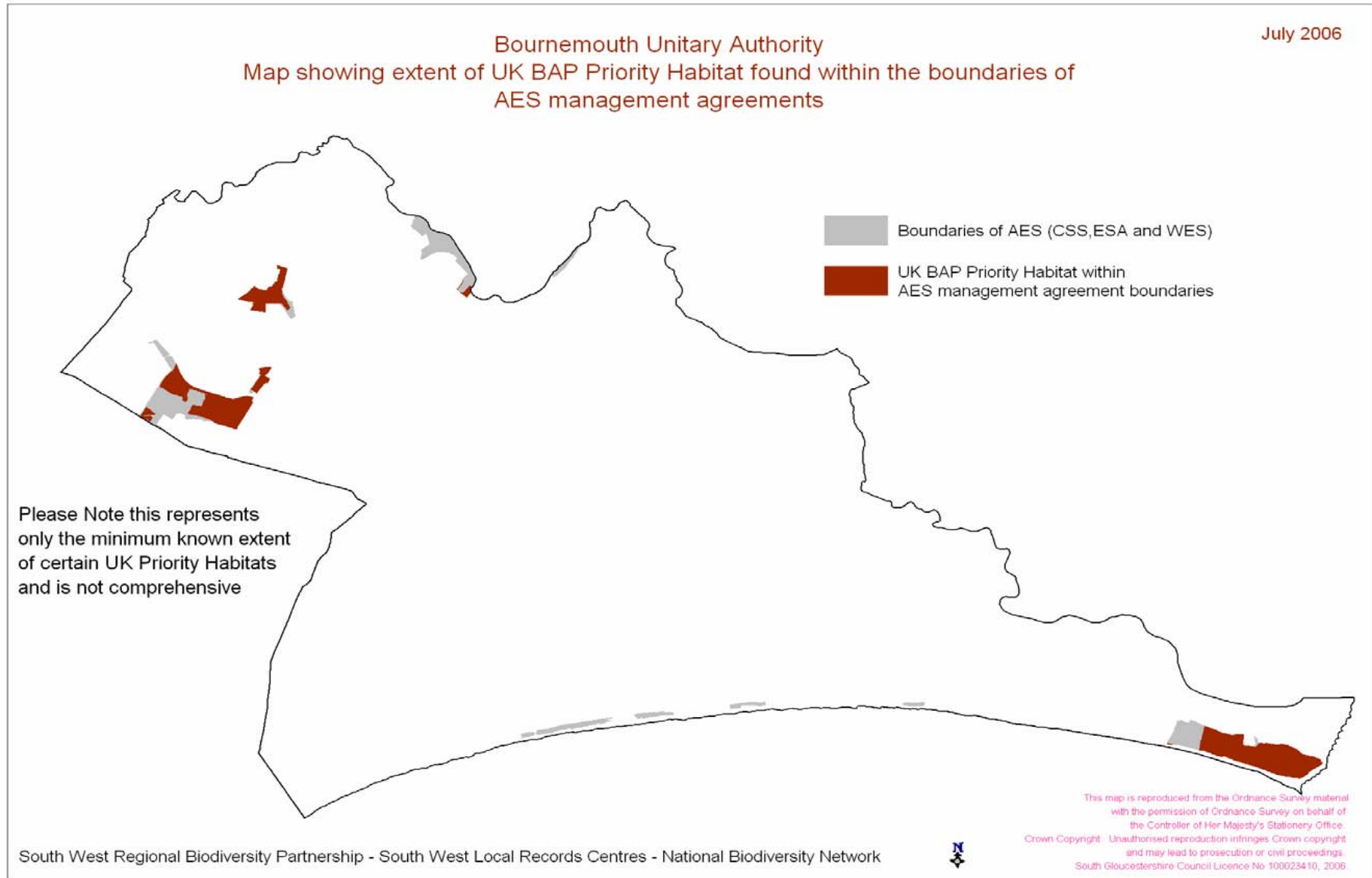


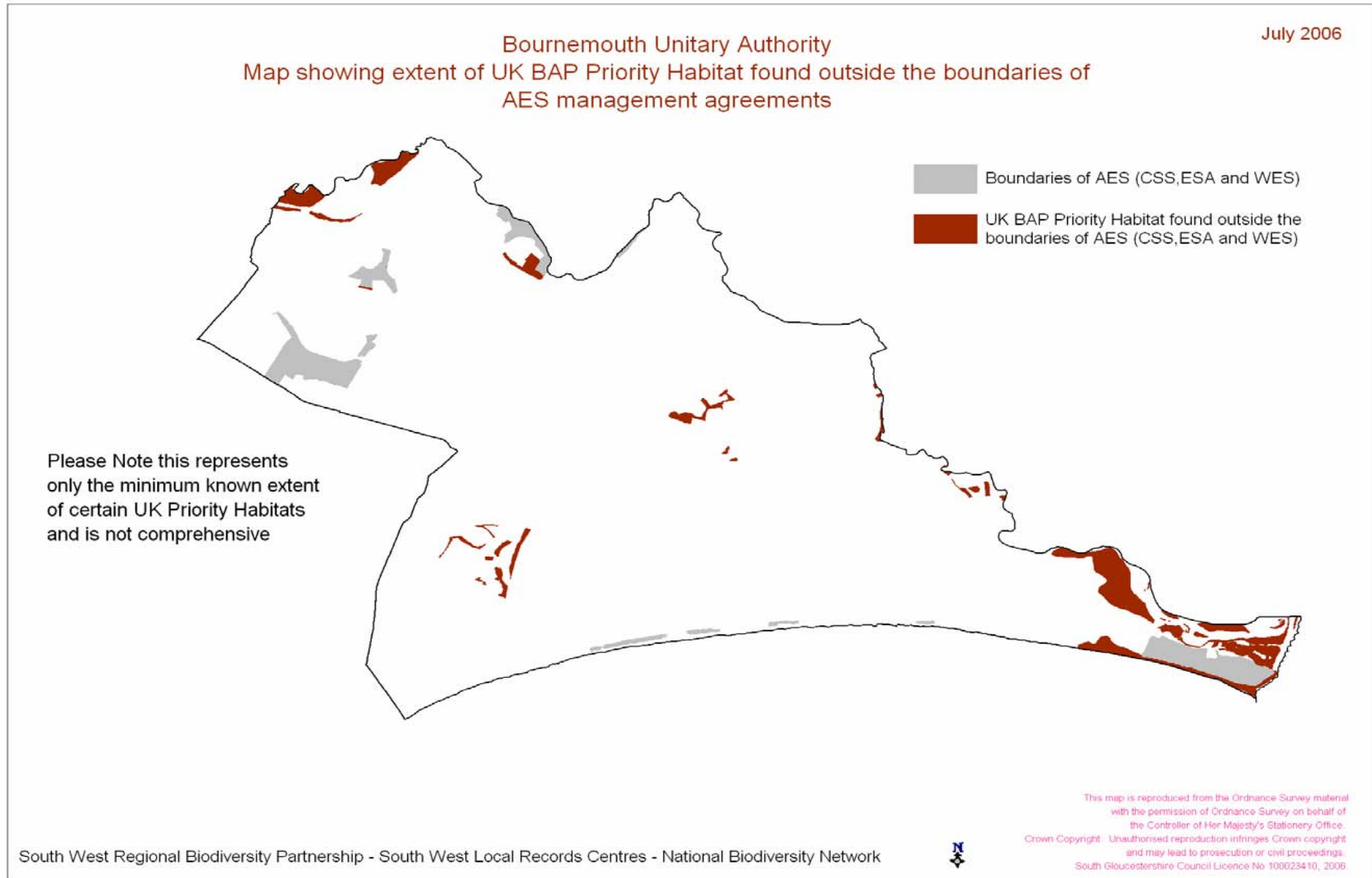
Please Note this represents only the minimum known extent of certain UK BAP Priority Habitats and is not comprehensive

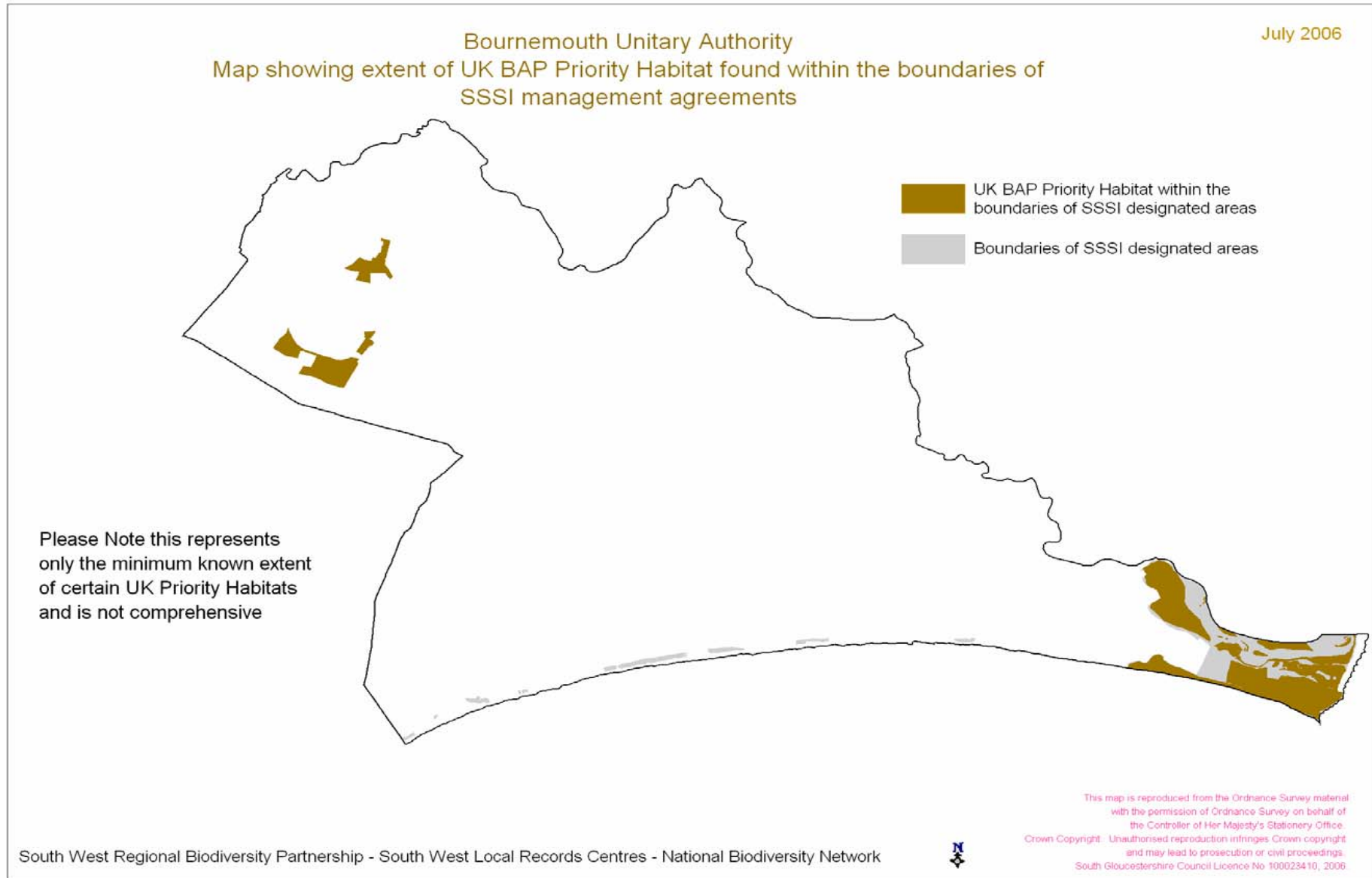
This map is reproduced from the Ordnance Survey material with the permission of Ordnance Survey on behalf of the Controller of Her Majesty's Stationery Office.  
 Crown Copyright. Unauthorised reproduction infringes Crown copyright and may lead to prosecution or civil proceedings.  
 South Gloucestershire Council Licence No 100023410, 2006.

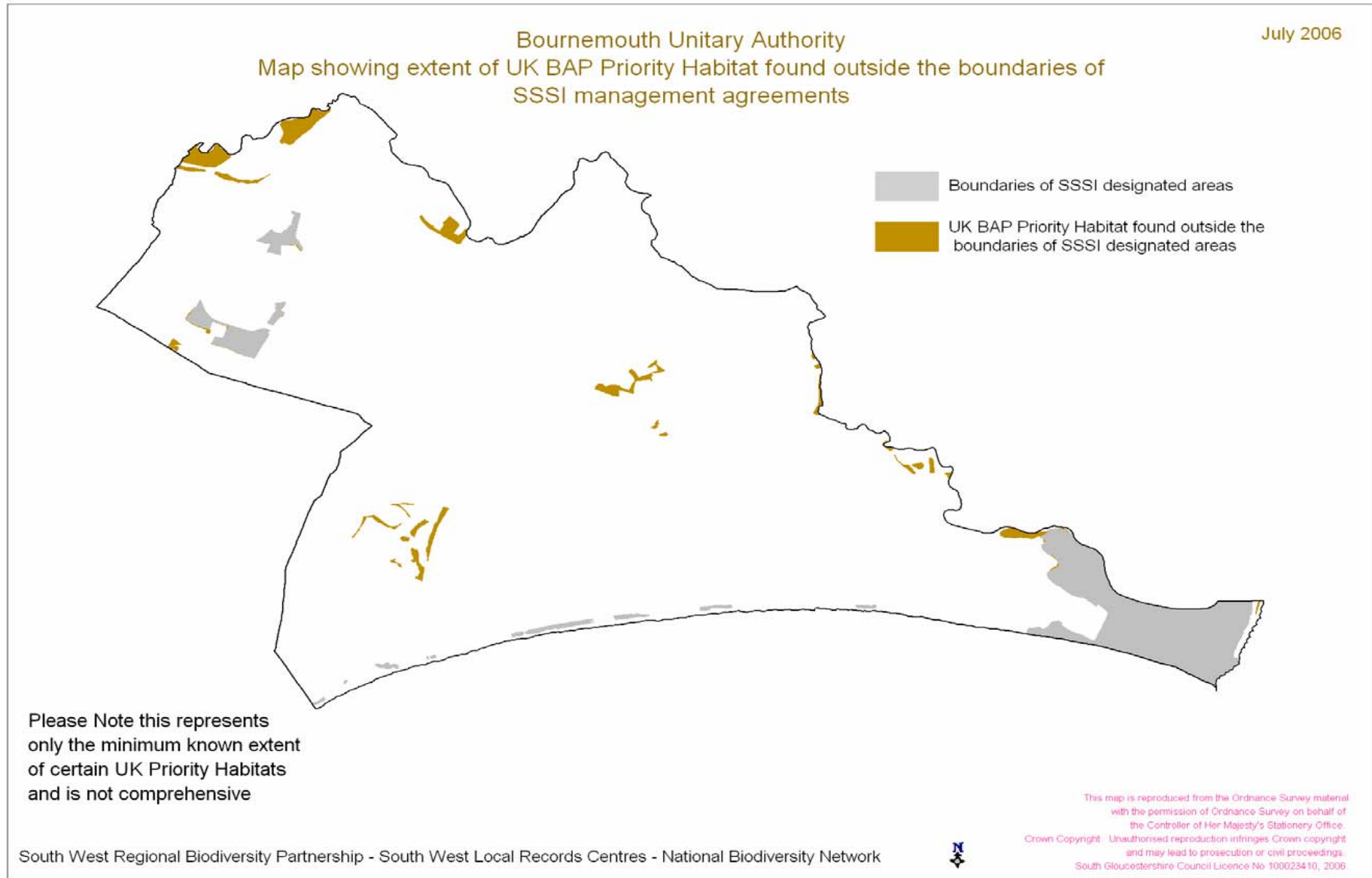
South West Regional Biodiversity Partnership - South West Local Records Centres - National Biodiversity Network

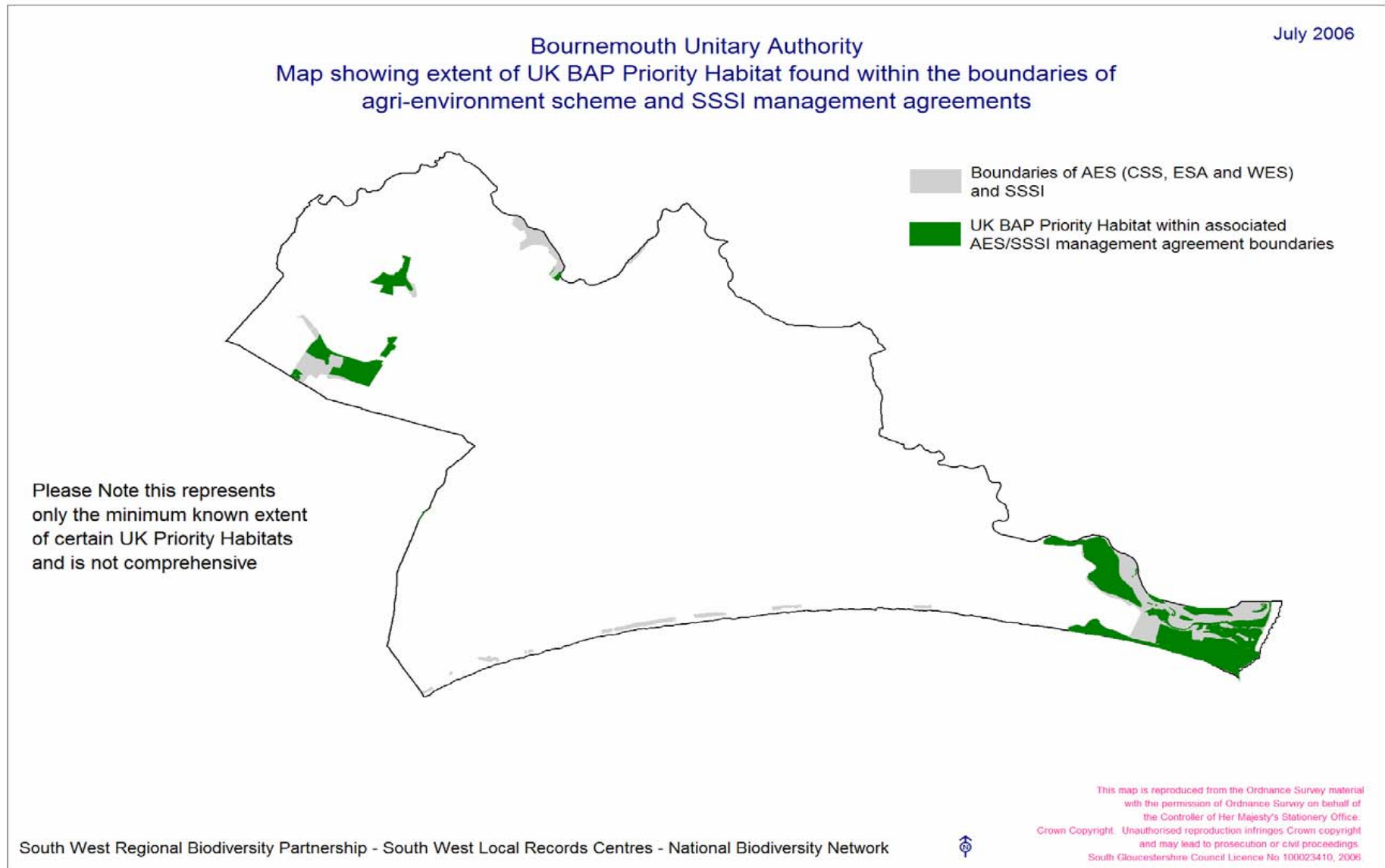




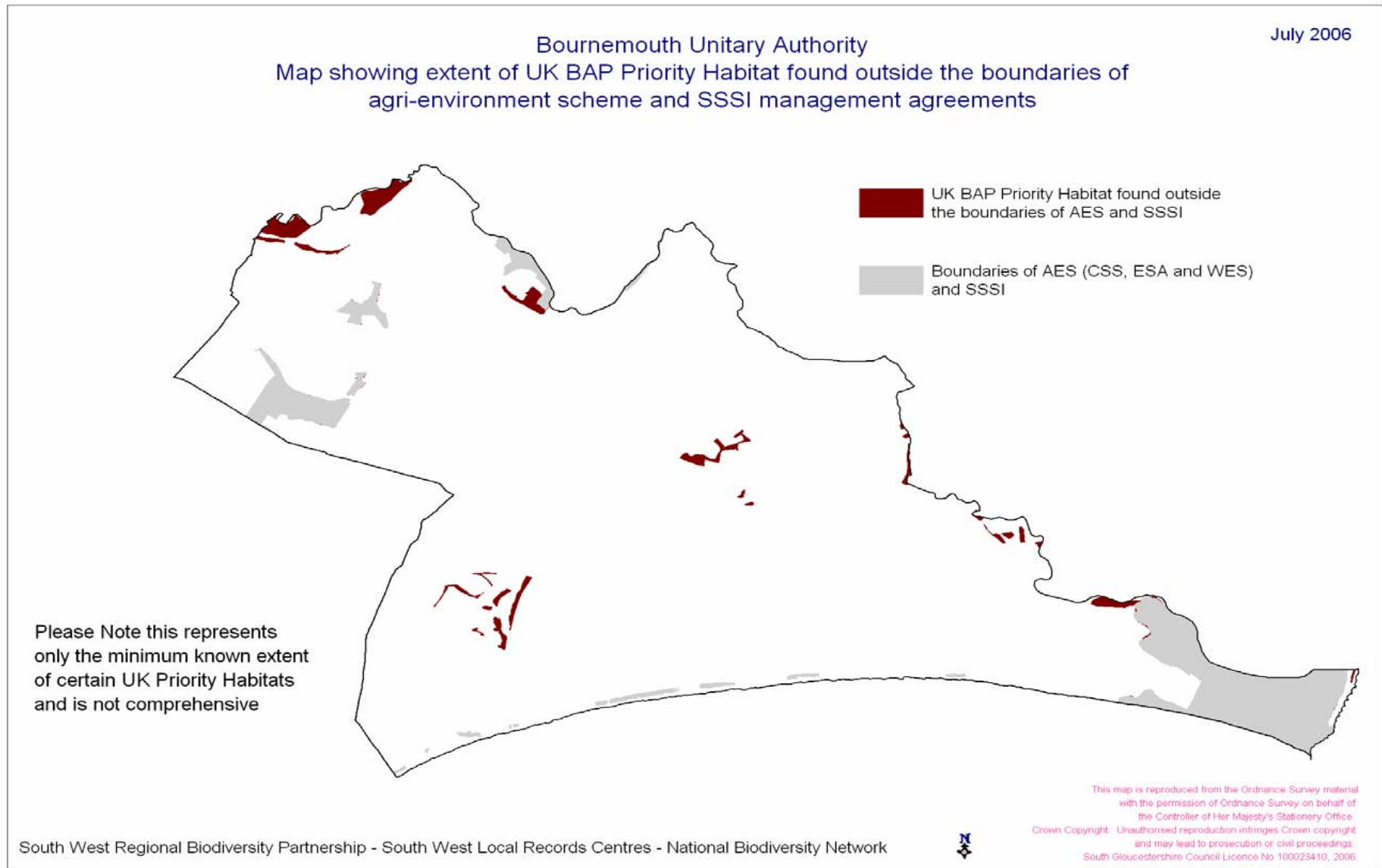














July 2006

Bournemouth Unitary Authority  
Map showing extent of overlap between land under  
agri-environment scheme agreements and SSSI designated areas



SSSI area designation  
Land under AES (WES,ESA,CSS)  
agreement

South West Regional Biodiversity Partnership - South West Local Records Centres - National Biodiversity Network



This map is reproduced from the Ordnance Survey material with the permission of Ordnance Survey on behalf of the Controller of Her Majesty's Stationery Office. Crown Copyright. Unauthorised reproduction infringes Crown copyright and may lead to prosecution or civil proceedings. South Gloucestershire Council Licence No 100023410, 2006.